

系列名 Series Name

RMD-X V3

曾用名 Previous Name

RMD-X10 S2 1:35 V3

电机简称 Motor Simplified Name

X10-100



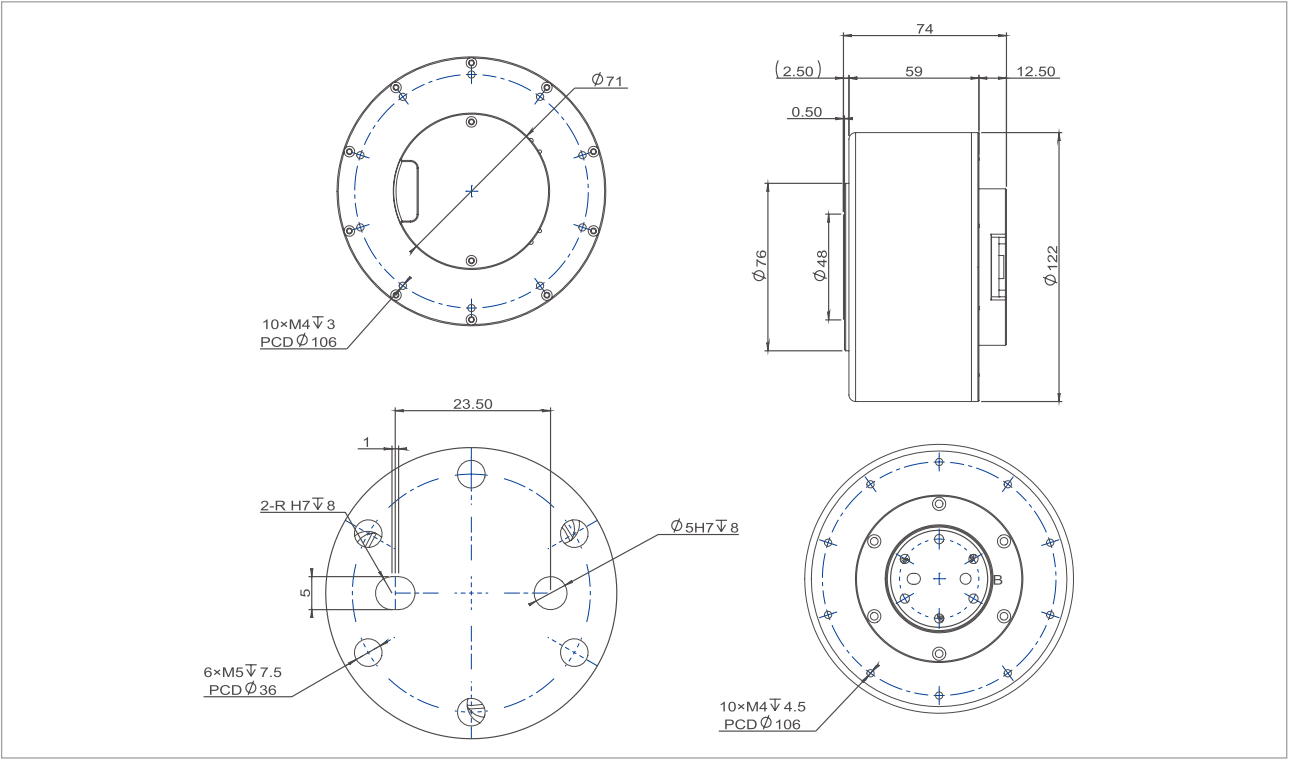
双编码器 Dual Encoder

型号 Actuator Full Name	货品编码 Product Code	抱闸/非抱闸 With Brake/Without Brake
RMD-X10-P35-100-R-N	1102070350230200	N (without brake)
RMD-X10-P35-100-C-N	1102070350130200	N (without brake)

* 此电机如需抱闸可支持定制 This motor support brake customization

* 此电机如需防水可支持定制IP54 This motor support IP54 customization

尺寸安装图 Installation Drawing



产品参数 Product Parameters

产品名称 Item Name		X10-100
减速机类型 Reducer Type	-	行星减速机 Planetary Reducer
减速机电速比 Gear Ratio	-	35:1
输入电压 Input Voltage	V	48
额定功率 Rated Power	W	265
额定扭矩 Rated Torque	N.m	50
额定速度 Rated Speed	RPM	50
额定电流 Rated Current	A	6.7
峰值扭矩 Peak Torque	N.m	100
峰值电流 Peak Current	A	13.5
电机效率 Efficiency	%	82
输入端编码器 Input Encoder	-	16 bit
输出端编码器 Output Encoder	-	14 bit
通信方式及波特率 Communication Method & Baudrate	-	CAN:1M RS485:115200/500K/1M/2.5M
轴向负载 Axial Payload	N	1625
径向负载 Radial Payload	N	2250
转动惯量 Inertia	Kg.cm ²	198.6
极对数 Pole Pair	-	21
反驱力 Back Drive Torque	N.m	2.88
齿隙 Backlash	arc min	15
重量 Weight	N (without brake)	g
	B (with brake)	-
		1700
		/

* 额定扭矩测试方法：在环境温度摄氏24度（无其他散热方式）下，在额定转速下进行测试，电机扭矩在温升60度条件下达到温度平衡、可长时间工作点为该电机额定扭矩值。

* Rated torque test method: When the ambient temperature is 24 degrees Celsius (no other heat dissipation methods), the test is performed at the rated speed. The motor torque reaches temperature balance under the condition of a temperature rise of 60 degrees Celsius, and the long-term working point is the rated torque value of the motor.

电机特征曲线 Motor Characteristic Curve

