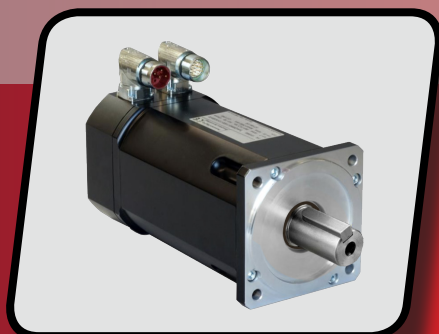


BRUSHLESS AC SERVOMOTORS

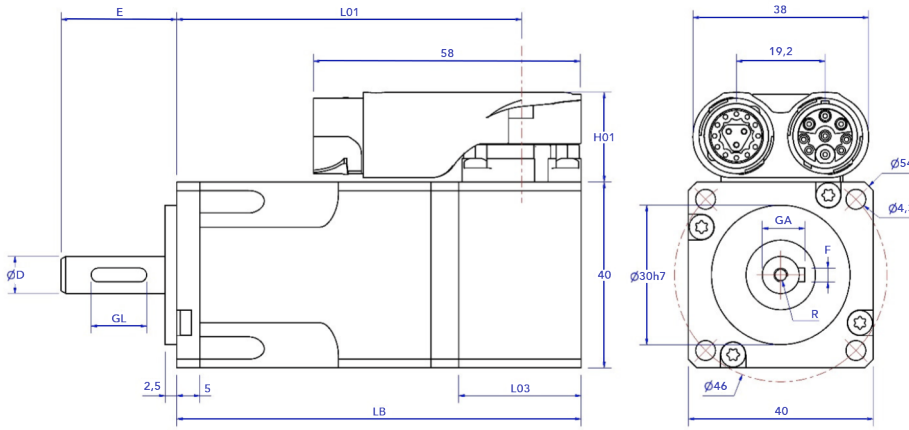


ADM SERIES

V8.4.1

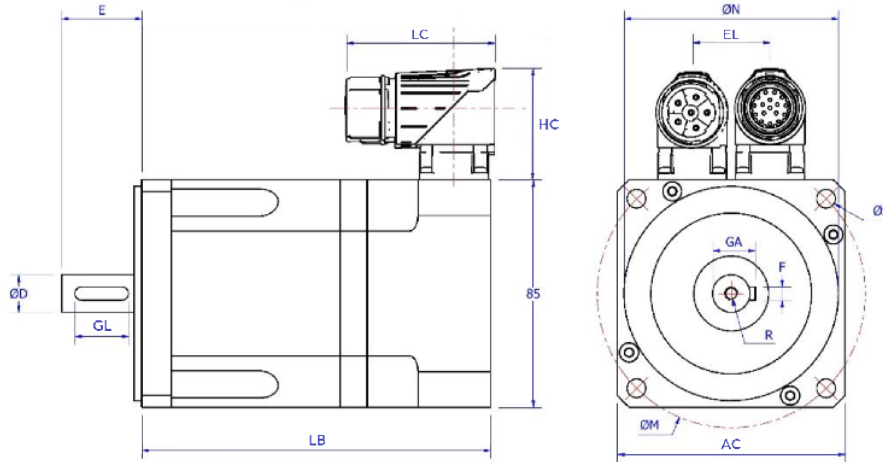
DRAWINGS

ADM40



MOTOR LENGTH DATA LB (mm)		
	ADM40C	ADM40G
Resolver & TTL 1024ppr	87,5	105,5
EQI1130	+3,5	+3,5
EKS36	+16,5	+16,5
BRAKE	+32	+32

ADM60, 85, 115, 142

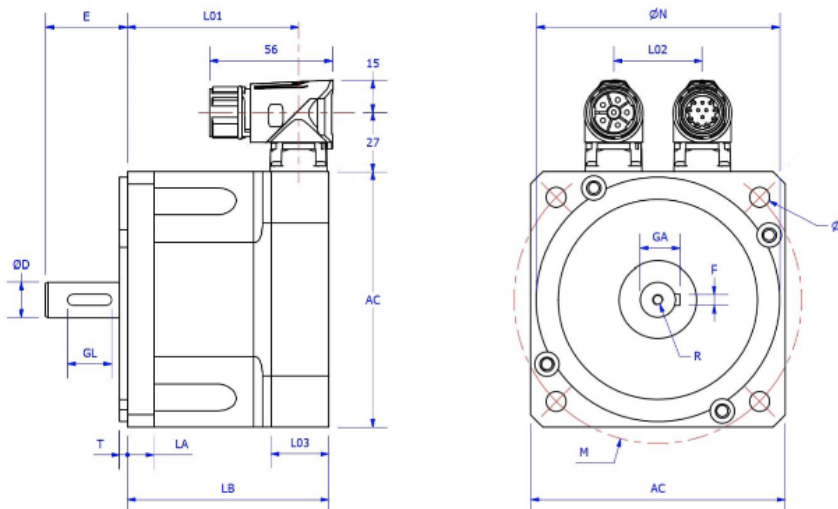


	SHAFT (mm)								
	ADM60		ADM85		ADM115		ADM142		
D	9j6	11j6	14j6	14j6	19j6	19j6	24j6	24j6	32k6
E	20	23	30	30	40	40	50	50	58
GL	12	15	20	20	32	32	32	32	45
GA	10,2	12,5	16	16	21,5	21,5	27	27	35
F	3	4	5	5	6	6	8	8	10
R	-	M4x10	M5x15	M5x15	M6x16	M6x16	M8x15	M8x15	M12x22

	FLANGE & CONNECTOR (mm)							
	ADM60		ADM85		ADM115	ADM142		
	40/63	56B14	50/70	56B5	63B5			
N	40j6	50j6	50j6	80j6	95j6	110j6	130j6	
M	63	65	70	100	115	130	165	
S	5,8	M5	5,5	7	9	9	11	
AC	60	60	60	85	100	115	142	
HC	37	37	37	42	42	42	42	
LC	47	47	47	57	57	57	57	
EL	23	23	23	29	29	40	40	

	MOTOR LENGTH DATA LB (mm)												
	ADM60		ADM85				ADM115			ADM142			
	C8	G8	C8	E8	J8	L8	C8	G8	J8	A8	E8	J8	L8
Resolver, EQI1130 & TTL 2048ppr	104	132	115	145	175	205	147	187	227	174	224	274	324
EKS36	+14	+14	+15	+15	+15	+15	+14	+14	+14	+13	+13	+13	+13
BRAKE	+30	+30	+48	+48	+48	+48	+49	+49	+49	+54	+54	+54	+54

ADMXXX-XC



	COMPACT MOTOR		
	ADM85A	ADM115A	ADM142X
Resolver, EQI1130 & TTL 2048ppr			
AC	85	115	142
Nj6	80	110	130
M	100	130	165
S	7	9	11
T	3	3,5	3,5
LA	11	12	15
Dj6	14	19	24
E	30	40	50
R	M5X15	M6X16	M8X16
F	5	6	8
GL	20	32	32
GA	16	21,5	27
LB	87	94	108,5
L01	73,5	80,5	95
L02	29	40	40
L03	26	26	27
BRAKE			
L01	101,5	124	134,5
LB	115	137	148

TECHNICAL DATA

Motor type – Voltage gradient V(pk)/1000rpm	Cont. stall torque	Cont. stall current (rms)	Peak torque	Peak current	Resistance	Inductance	Maximum Speed				Rotor inertia	Torque constant (3xKtrms)	Indicative Power	Nett Weight	
	Nm	A	Nm	Arms	Ohms	mH	380 Vac	230 Vac	48 Vdc	24 Vdc	kg.cm²	Nm/A	W	kg	
ADM 40	ADM40C8-05S	0,19	3	0,6	12	1,2	0,8	-	-	6000	3000	0,037	0,063	100	0,53
	ADM40C8-10S	019	1,52	0,6	6,1	6,8	2,6	-	-	1700	-	0,037	0,12	100	0,53
	ADM40C8-20S	0,19	0,78	0,6	3,1	27	11	-	8000	-	-	0,037	0,24	100	0,53
	ADM40G8-05S	0,38	6,6	1,3	26	0,54	0,26	-	-	6600	2500	0,061	0,06	200	0,68
	ADM40G8-11S	0,38	3	1,3	12	2,4	1,25	-	-	2300	-	0,061	0,13	200	0,68
	ADM40G8-27S	0,38	1,2	1,3	4,8	14	7,9	-	8000	-	-	0,061	0,32	200	0,68
ADM 60	ADM60C8-08S	0,7	7	2,4	28	0,57	0,72	-	-	3500	1300	0,13	0,1	300	1,2
	ADM60C8-11S	0,7	5,3	2,3	21,2	0,9	1,3	-	-	2500	-	0,13	0,13	300	1,2
	ADM60C8-38S	0,7	1,6	2,5	6,4	8,6	10	8000	6200	-	-	0,13	0,45	300	1,2
	ADM60G8-14S	1,4	8	4,8	32	0,43	0,77	-	-	2300	1000	0,23	0,17	400	1,7
	ADM60G8-42S	1,4	2,8	4,7	11,2	3,2	5,6	8000	6300	-	-	0,23	0,5	400	1,7
	ADM60G8-69S	1,4	1,73	4,8	6,6	8,4	13	6000	3900	-	-	0,23	0,81	400	1,7
ADM85	ADM85A8-51C	1	1,7	3,6	7	7,9	11	6500	4500	-	-	0,7	0,6	350	2
	ADM85A8-79C	1	1,1	3,6	4,5	19	25	5500	3000	-	-	0,7	0,93	350	2
	ADM85C8-14S	1,5	9,3	5,1	46	0,2	0,6	-	-	3000	1500	0,92	0,165	400	2,4
	ADM85C8-28S	1,5	4,5	5	15,2	1,3	2	-	-	2400	1200	0,92	0,33	400	2,4
	ADM85C8-49S	1,5	2,6	6,4	13	4	6,3	6500	5000	-	-	0,92	0,58	400	2,4
	ADM85C8-78S	1,5	1,65	5,1	6,6	9	16	6000	3100	-	-	0,92	0,91	400	2,4
	ADM85E8-14S	2,9	18	10	72	0,1	0,22	-	-	2700	1200	1,72	0,16	800	3,5
	ADM85E8-21S	2,9	12	10	48	0,24	0,5	-	-	1700	-	1,72	0,24	800	3,5
	ADM85E8-48S	2,9	5,2	10	21	1,3	2,7	6500	5400	-	-	1,72	0,56	800	3,5
	ADM85E8-78S	2,9	3,2	10	12,8	3,4	7	6000	3200	-	-	1,72	0,91	800	3,5
	ADM85J8-20S	4,2	17	14	68	0,14	0,32	-	-	1800	-	2,53	0,24	1200	4,6
	ADM85J8-51S	4,2	7	14	28	0,86	2	6500	5200	-	-	2,53	0,60	1200	4,6
	ADM85J8-78S	4,2	4,6	14	18	1,9	4,5	6000	3300	-	-	2,53	0,91	1200	4,6
	ADM85L8-28S	5,3	17	19	68	0,17	0,43	-	-	1300	-	3,33	0,32	1400	5,7
	ADM85L8-57S	5,3	8,5	19	34	0,67	1,6	6500	4700	-	-	3,33	0,66	1400	5,7
ADM85L8-78S	5,3	5,8	18	23	1,4	3,5	5000	3300	-	-	3,33	0,91	1400	5,7	
ADM115	ADM115A8-55C	2,1	3,3	7,3	13,5	3,5	6,3	6000	4500	-	-	2,8	0,65	600	3,6
	ADM115A8-86C	2,1	2,1	6,9	8,6	8,6	16	5000	3000	-	-	2,8	1	600	3,6
	ADM115C8-11S	4	32	3,2	130					4500	1500	5	0,125	1200	5,6
	ADM115C8-50S	4	7,2	14	29	0,93	1,8	-	5300	-	-	5	0,58	1200	5,6
	ADM115C8-63S	4	5,6	14	22	1,34	3,3	6000	4100	-	-	5	0,73	1200	5,6
	ADM115C8-78S	4	4,4	14	18	2,3	5,6	6000	3200	-	-	5	0,91	1200	5,6
	ADM115C8-136S	4	2,5	14	10	6,9	16	3000	1800	-	-	5	1,59	1200	5,6
	ADM115G8-31S	7,6	23	28	92	0,1	0,3	-	-	1200	-	9,6	0,36	1900	8,5
	ADM115G8-83S	7,6	7,8	26	31	0,95	2,9	5000	3100	-	-	9,6	0,98	1900	8,5
	ADM115G8-139S	7,6	4,7	26	19	2,7	7,5	3000	1800	-	-	9,6	1,62	1900	8,5
	ADM115J8-58S	11,3	17	39	68	0,24	0,9	6000	4600	-	-	14	0,68	2500	11,4
	ADM115J8-83S	11,3	11,9	40	48	0,5	1,6	5000	3200	-	-	14	0,98	2500	11,4
ADM115J8-139S	11,3	7	39	28	1,5	4,9	3000	1800	-	-	14	1,62	2500	11,4	
ADM142	ADM142X8-58C	5	7,3	17	30	1	2,7	6000	4500	-	-	12	0,68	1500	6
	ADM142X8-93C	5	4,6	17	19	2,3	6,8	5000	3000	-	-	12	1,1	1500	6
	ADM142A8-23S	10	40	36	160	0,03	0,18	-	-	1700	-	22	0,26	2100	11
	ADM142A8-88S	10	10,5	36	42	0,65	2,6	5000	3000	-	-	22	1,03	2100	11
	ADM142A8-132S	10	6,5	34	26	1,61	7	3000	1900	-	-	22	1,54	2100	11
	ADM142E8-79S	19	21	66	84	0,2	1,4	5800	3300	-	-	43	0,93	3200	16
	ADM142E8-102S	19	16	65	64	0,34	1,9	4500	2600	-	-	43	1,2	3200	16
	ADM142E8-132S	19	12,3	66	49	0,61	3,3	3000	2000	-	-	43	1,54	3200	16
	ADM142J8-93S	27	26	95	104	0,17	0,94	5100	3900	-	-	65	1,09	4500	21
	ADM142J8-110S	27	21	91	84	0,25	1,7	4500	2400	-	-	65	1,29	4500	21
	ADM142J8-150S	27	15,4	91	62	0,46	2,7	3000	1700	-	-	65	1,75	4500	21
	ADM142L8-120S	35	25	119	100	0,18	1,7	4000	2200	-	-	87	1,41	5000	26
ADM142L8-150S	35	20	118	80	0,32	1,9	3000	1800	-	-	87	1,75	5000	26	

RATING DATA

The ADM series of servomotors combine Neodymium Iron Boron magnets with low inertia rotors, giving cost effective performance.

- Ambient temperature range 0-40°C
 - Max Altitude 1000 m (above sea level)
 - Insulation class F (materials F & H)
 - RMS values
 - Insulation system conforms to UL
 - IP65 with shaft seal fitted
 - Motor Installation B5 – V5
 - Cooling IC0041
 - Typical tolerance value $\pm 10\%$
 - Continuous ratings apply with a rise of $\Delta T = 100K$ on the windings when fitted on an aluminium plate with dimensions :
 - 254 x 254 x 8mm (ADM40, 60, 85)
 - 305 x 305 x 15mm (ADM115)
 - 457 x 457 x 15mm (ADM142)
- (Contact A2V for ambient temperatures outside of the published range or for altitudes above 1000m)

MOTOR PART NUMBER

ADM 40A8 - 10S - 000 - 00

① ② ③ ④ ⑤ ⑥ ⑦ ⑧ ⑨

- ① Square flange (mm)
- ② Motor length with A as the shortest
- ③ Number of poles
- ④ Voltage/krpm pk
- ⑤ S = Standard
C = Compact
- ⑥ Holding brake
0 = Without
1 = With
- ⑦ Feedback
3 = Encoder EQI1131 Endat Multi Turn 2.2
4 = Incremental Encoder 2048 PPR + hall
5 = Incremental Encoder 1024 PPR + hall or magnetic encoder 1024 RLS1)
6 = Incremental Encoder 4096 PPR + hall
8 = Incremental Encoder 8192 PPR + hall
9 = Resolver size 15 2p 7V 10KHz
A = Absolute Encoder AD36 BISS 31 bit Multi turn
C = Encoder Biss-C MT at battery cell
E = Encoder EQN1125 Endat 2.1 512 i/g
M = Encoder SRS50 Hiperface
R = Absolute Encoder AD36 SSI 25 bit Multi turn
Z = SKM36 Hiperface 128i PPT Multi turn
Y = EKM36 17bit Multi turn NO SIL, DS
- ⑧ Connectors
1 = Flying leads with cable glands
7 = M23 connectors 90° rotatable
8 = M17 connectors 90° rotatable
9 = M40 connectors 90° rotatable >20A, feedback M23
B = M15 connector 90° rotatable I-tec single 0 pin (DSL Hiperface)
D = M15 connector 90° rotatable Y-tec single 9 pin power and 12+3 pin feedback
- ⑨ Special version
23 = Shaft 19x40mm Flange 63B5
24 = Shaft 24x50
26 = Shaft without key
32 = Shaft 32x58
48 = Shaft 14x30mm and Flange 50/70mm (spigot/PCD)
62 = Shaft 9x20mm
66 = IP65 Shaft seal fitted
90 = Thermal protection PT1000
xx = Special Shaft and Flanges (on request)



IP65 enclosure protection with shaft seal



Industry standard shaft and flange sizes



100 W to 5 kW rated output power



Ambient operation temperature from 0°C to +40°C



Class F insulation

OPTIONS

■ STANDARD FEATURE ● OPTION - OPTION NOT AVAILABLE

DESCRIPTION	OPTIONS	SERVOMOTOR TYPE				
		40	60	85	115	142
Mechanical	Flange mounted	■	■	■	■	■
	Keyway	■	■	■	■	■
	Plain shaft	●	●	●	●	●
	IP65 Shaft seal fitted	●	●	●	●	●
Electrical connection	1= Flying leads with cable glands	-	●	●	-	-
	7= M23 connectors 90° rotatable	-	-	●	●	●
	8= M17 connectors 90° rotatable	-	●	-	-	-
	9= M40 connectors 90° rotatable >20A, feedback M23	-	-	-	-	●
	B= M15 connector 90° rotatable I-tec single 0 pin(DSL Hiperface)	-	●	-	-	-
D= M15 connector 90° rotatable Y-tec single 9 pin power and 12+3 pin feedback	●	-	-	-	-	
Failsafe holding brake	PM type 24VDC 6W Mbr=0,4Nm - Jbr=0,019 kgcm2 m=200g	●	-	-	-	-
	Spring applied Brake 24VDC 8W Mbr=0,3Nm - Jbr=1,14e-3 kgcm2 m=130g	●	-	-	-	-
	PM type 24±6%VDC Mbr= 2Nm 10W Jbr=0,045kgcm2 m=200g	-	●	-	-	-
	PM type 24VDC±6% Mbr = 11Nm 16W Jbr = 1,06kgcm2 m=0,6 kg	-	-	●	-	-
	PM type 24VDC±6% Mbr =22Nm 18W Jbr = 3,6 kgcm2 m=1,1kg	-	-	-	●	-
PM type 24±VDC Mbr =40 Nm 24W Jbr = 9,5kgcm2 m=1,4kg	-	-	-	-	●	
Feedback device	3 = Heidenhain Encoder EQI1131 Endat Multi Turn 2.2	●	●	●	●	●
	4= Incremental Encoder 2048 PPR + hall	-	■	■	■	■
	5 = Incremental Encoder 1024 PPR + hall or magnetic encoder 1024 RLS1)	■	●	●	●	●
	6= Incremental Encoder 4096 PPR OIH48 + hal	●	-	●	●	●
	8= Incremental Encoder 8192 PPR + hall	-	●	●	●	●
	9= Tamagawa Resolver size 15 2p 7V 10KHz	-	■	■	■	■
	A= Hengstler Absolute Encoder AD36 BISS 31 bit Multi turn	-	●	●	●	●
	C= Encoder Biss-C MT at battery cel	●	●	●	-	-
	E= Heidenhain Encoder EQN1125 Endat 2.1 512 i/g	-	●	●	●	●
	M= Sick Encoder SRS50 Hiperface	-	●	●	●	●
R= Hengstler Absolute Encoder AD36 SSI 29 bit Multi turn	-	●	●	●	●	
Z= Sick SKM36 Hiperface 128i PPT Multi turn	-	-	-	●	●	
Y= Sick EKM36 17bit Multi turn NO SIL, DS	●	●	-	●	●	
UL approval	UL certification	■	■	■	■	■



Contact A2V for availability of encoder and special options for various sizes and quantities

In accordance with our policy of continual product improvement, A2V reserves the right to amend the specification of these products without prior notification